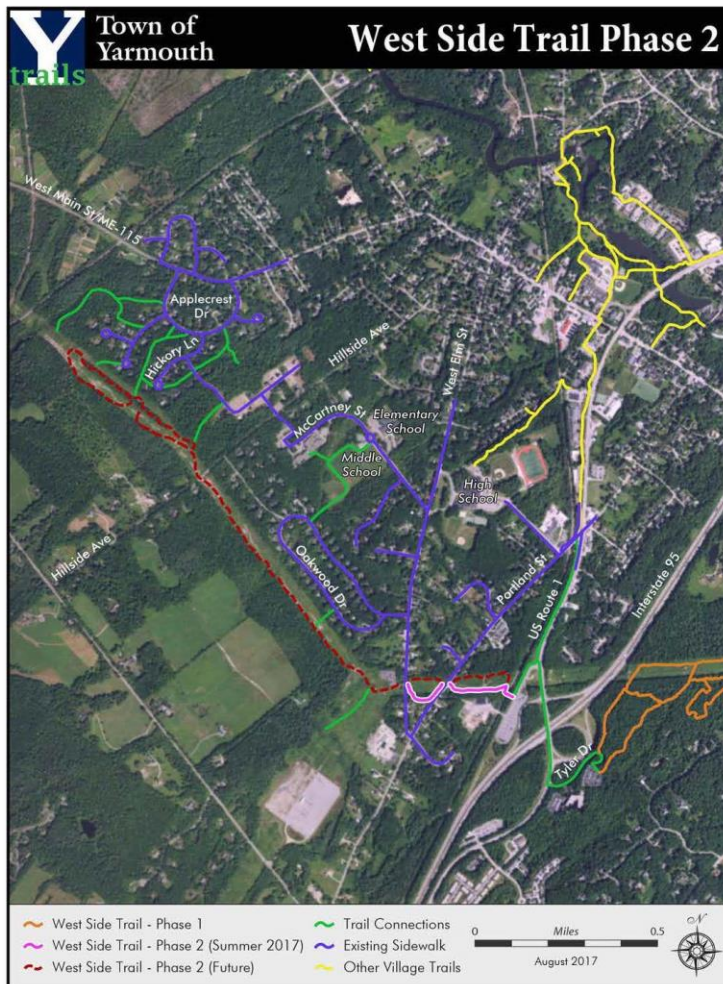


WEST SIDE TRAIL PHASE 2 CONSTRUCTION NOW UNDERWAY
New phase, which will connect Route 1 to West Elm Street, expected to open mid-November 2017

YARMOUTH, Maine (Aug. 20, 2017) - Yarmouth's West Side Trail Committee is thrilled to announce that construction of Phase 2 of the West Side Trail has begun. The 0.3-mile stretch will connect the Exit 15 Park & Ride facility on Route 1 to West Elm Street (shown as a pink line on the map below). The work is expected to be complete in mid-November. The final stretch (a 1.5-mile section of trail that will connect to the trail network in the Applewoods Subdivision between West Elm and Hillside Streets) will begin in late-2018.



Phase 2 features improved accessibility for beginners, kids, and those who rely on mobility devices

Though Phase 2 is a relatively-short addition to the 6.2 mile-West Side Trail that opened in 2011, it plays a critical role in enhancing accessibility to users of all ages and abilities and realizing the long-term vision of creating a town-wide trail network that spans from Yarmouth's western to eastern border.

Phase 2 will be accessible for those who use wheelchairs, walkers, canes, and strollers. With more expansive-width and packed-down surface, Phase 2 will also be ideal for beginners, families, and young children who are just learning to hike and ride mountain bikes.

Phase 2 has been designed to meet Universal-Access Standards, which means that they will be wider and hardened with gravel to accommodate mobility devices. Spanning approximately 5-feet wide, on Phase 2, users will be able to walk side by side, something that has not been possible on other parts of the trail due to terrain constraints.

DONATIONS FROM YARMOUTH ROTARY & ROYAL RIVER CONSERVATION TRUST

This exciting new phase of the Trail is being made possible by generous contributions from the **Rotary Club of Yarmouth** and the **Royal River Conservation Trust (RRCT)**. The Yarmouth Rotary has secured a \$3,000 grant for universal access trails and is contributing \$4,000 of its club funds. RRCT has contributed \$5,000 towards project, and is on board to contribute \$10,000 in 2019.

These donations build on both organizations' long-standing commitment to the West Side Trail Project, without these the trail would not have been possible.

Donations and grants are the sole source of funding for the West Side Trail. Continued trail enhancements and expansion will only be possible with the continued generosity of the community.

Please consider making a contribution to the West Side Trail Fund. Donations can be sent to Yarmouth Community Services office behind town hall or mail it to them at 200 Main Street, Yarmouth, ME 04096. You can write a check made out to the Town of Yarmouth, with a notation for the West Side Trail fund. If you prefer to pay by credit card, please call the YCS Office at 846-2406.

TRAIL CONSTRUCTION: NO DISRUPTIONS & UPCOMING EVENTS

Construction of the trailhead, drainage and trail surfacing on the MDOT property is expected to begin in late August, and be open to users by mid-November. Building this phase will create no disruption to automobile traffic on Route 1, and it will not disrupt access to the existing open network of the West Side Trail.

Join the West Side Trail Committee for workdays and events:

Often we are clearing and trimming vegetation, contributing to basic maintenance, painting blazes, and other small tasks. Volunteers of all ages are welcome. No special skills or experience are necessary. Check the [Yarmouth West Side Trail Facebook page](#) for additional details as events are scheduled.

ABOUT THE WEST SIDE TRAIL

Yarmouth's West Side Trail is a network of walking and biking trails connected to Fels-Groves Farm Preserve, Sandy Point Beach, and various Yarmouth neighborhoods. This Town of Yarmouth initiative has been made possible by generous support from the Royal River Conservation Trust, Rotary Club of Yarmouth, the National Park Service, Central Maine Power Company, Bicycle Coalition of Maine, and the Greater Portland chapter of the New England Mountain Bike Association. Significant funding has also come from the Maine Bureau of Parks & Lands, Recreational Trail Program. The vision for a trail that connects Yarmouth's Eastern and Western borders, dates back to the town's 1988 Comprehensive Plan. Phase 1 of the trail, a 6.2-mile stretch that reaches from Route 1 out to Cousins Island, opened in 2014.

[You can learn more about the trail on the YCS web site.](#)

For more information, contact:

Dan Ostrye

Yarmouth Bicycle and Pedestrian Committee
dostrye@gmail.com

Karyn MacNeill

Yarmouth Community Services
kmacneill@yarmouth.me.us